

- ALL-IN-ONE
- MOBILITY
- MODULAR
- PANELS PC
- PRINTERS
- DISPLAYS
- ACCESSORIES

# TEOS TOUCH 15/19"



Ultra-slim integrated touchscreen system

These 'all-in-one' touchscreen panel-PC systems are fanless and feature a slimline design as well as an IP 65 splash-proof front.

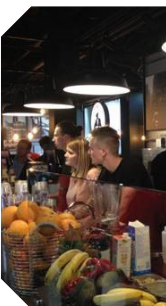
Easy to install anywhere and ideal for industrial, automotive and medical applications, it is also perfectly adapted to digital display equipment and configurations.

The TEOS Touch 1536 and 1936 are integrated 15 or 19inch touchscreen systems that are just 48mm thick.

Fanless, dust-resistant and splash-proof, they offer excellent protection against water and other

liquids. The front face complies with IP65 standards, ideal for use in harsh environments. The range is powered by an INTEL Bay Trail J1900 Quad Core processor, ensuring optimum energy use.

These systems are perfect for the industry and kiosk sectors, for digital display applications, and in all medical or sales and service outlets (administration & transport, leisure and cultural venues, tourism, etc).



# TEOS TOUCH



Touchscreen panel PCs for dynamic display and data management solutions

Dust and waterproof display front (IP 65)

Robust & rugged metal housing

VESA – type mounting holes/brackets

Can be placed horizontally or wall mounted

Multiple Communications Ports



MODEL	1536	1936
Processor	INTEL Bay Trail J1900 Quad Core	
Memory	4 GB DDR3 SO DIMM – up to 8 GB	
Chipset	CPU integrated + + ICH 8M	
SSD	64 GB	

LCD / TOUCH PANEL		
Dimensions	15,1" LED LCD	19" LED LCD
Maximal resolution	1024 x 768	1280 x 1024
Technology	projected capacitive or resistive panel	projected capacitive or resistive panel
Brightness	350 cd/m <sup>2</sup>	250 cd/m <sup>2</sup>

INPUTS/OUTPUTS		
USB	1 port USB 3.0 + 4 ports USB 2.0	
Serial/COM	4 x RJ 48 (PIN 9 configurable - 5 or 12V via Bios)	
LAN (10/100/1000)	2 x RJ45	
Video output	1 VGA	
Audio output	1	
Micro input	0	1
Internal loud speaker	2W	3W

MISCELLANEOUS		
Dimensions (W x D x H mm)	363 x 48 x 280	434 x 48 x 359
Weight	4.9 kg	7.8 kg
Power	external 90W, 19V, 4,7A	
IP 65 standard	dust and waterproof front side	
VESA fixings	100 mm x 100 mm	
Operating temperature	0° ~ 50°C (32°F to 122°F)	
Storage temperature	-20° ~ 60°C (-4°F to 140°F)	
Humidity	20% - 80% (RH non-condensing)	
Security & EMC	CE, FCC Class A, LVD, EN60601-1-2	
Compatible OS	Windows 10 IoT Enterprise, Windows 8 Industry, Windows 7 Pro, POS Ready 7, Linux	

Specifications are subject to change without notice - © AURES 2020